

A man with a beard and short dark hair, wearing a purple robe with a yellow collar, stands against a black background. In the foreground, a lion is lying down, its head resting on the ground. The lion's fur is a mix of brown and orange tones.

DANIELE

ka moleteng wa ditau

MAPULA MARTHA MALATJI

Diswantšho ka Jonanda Kannemeyer

DANIELE KA MOLELETENG WA DITAU

© 2023 One Heart
Kgatišo ya pele 2023
E gatišitšwe Afrika Borwa
ISBN: 9781776467266

Puku e ka phatlalatšwa ntle le tefo, efela go kgahlanong le molao go e rekiša. Puku e humanwa go www.oneheartforkids.co.za.

Ka tumelelo ya bagatiši, puku e ka abelanwa ka go gatišwa, go fotokhophiwa goba ka mokgwa wa eletroniki. Puku ga se ya swanela go fetolwa ka mokgwa ofe goba ofe. Go kgopela tumelelo ya go gatiša puku o ka ikgokaganya le bagatiši.

One Heart
17 Pelikaan Street
Stellenbosch, 7600
South Africa
www.oneheartforkids.co.za

Mongwadi: Dr. Mapula Martha Malatji
Mothaladīswantšho: Jonanda Kannemeyer
Morulaganyi: Elizabeth Phala
Motlanyi: Imprint Publishing

Dikanegelo Tša Beibele
TESTAMENTE YA KGALE

DANIELE 6

DANIELE

ka moleteng wa ditau

Kgoši Darius wa Babilone o be a na le bao ba mo thušago. Magoši a lekgolo masome a mabedi le matona a mararo. Go bona ka moka kgoši o be a rata Daniele ka ge a le bohlale ebile a botega.

Kgoši a kgetha Daniele go ba molaodi wa setšhaba sa gagwe ka moka. Matona a se rate seo gomme ba loga leano.





Matona a tseba gore Daniele o rapela Modimo gararo ka letšatši.

Ba kgopela kgoši go tla ka molao woo o re go matsatšing a masemetharo setšhaba ka moka sa Babilone se rapele kgoši feela.

Yo ka obamelago medimo ye mengwe a lahlelwe moleteng wa ditau.

Daniele a tseba le go kwešiša molao woo. Le ge go le bjalo a tšwela pele go rapela Modimo gararo ka letšatši. A rapela a butše mafesetere a ngwako wa gagwe.



Matona ge ba bona a dira bjalo ba ya go mmege go kgoši.


Kgoši Darius a nyama ka ge a be a rata Daniele. Le ge go le bjalo, a ka se fetole molao. A laela gore Daniele a lahlelwe moleteng wa ditau.

Pele Daniele a lahlelwa ka moleteng kgoši a re go yena, "Nke Modimo wa gago yo o mo hlankelago ka mehla a ka go phološa"

Molete wa tswalelwa ka leswika.

Bošegong bjoo, kgoši o robetše ka go hlobaela a gopotše letona la gagwe la go botega.





Ge bo esa kgoši a ya moleteng wa ditau.
Kgoši a goelesa gomme Daniele a araba. A
thaba kudu gomme a laela gore Daniele a
ntšhwe ka moleteng.

Matona ale le malapa a bona ba lahlelwa ka
fao moleteneng wa ditau.

Go tloga tšatšing leo Babilona ka moka ya
hlankela Modimo wa Daniele.



Thapelo

Thušo ya ka e tšwa go Modimo mohlodi wa legodimo le lefase. O nkabela tše di botse manaba a ntebeletše.

Mošomo wa go bolela

Ka mantšu a gago hlaloša gore gobaneng Daniele a ile a lahlelwa moleteng wa ditau.

Dinaledi tša mmينو

Bassetsana ba bararo Mmanoko, Mosima le Pheladi ba tsebaga ka go opela bjalo ka thaga, nonyana ya go se hwe lentšu.

Bona ke barutwana sekolong sa praemari sa Mphebatho.

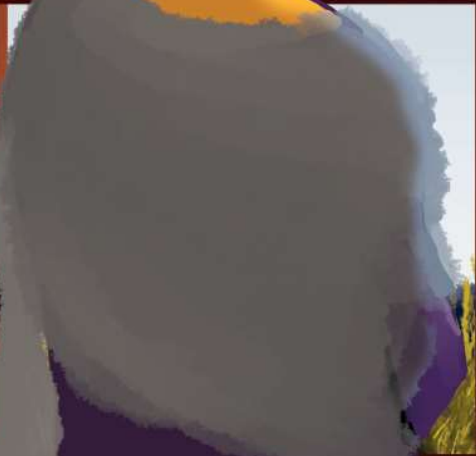
Sekolo se tumile ka go opela ebile se na le dikhwaere tše pedi tša dithopa sefoka.

Sekolo se itokišetša diphadišano tša meopelo. Morutiši o botša barutwana gore go na le tše o ba swanetšego go di dira go boloka mantšwana a bona.

Morutiši o ba laela gore ba swanetše go dula mafelo ao a tutetšego ba nwe dino tša go tutela. Ba se nwe kofi le dinwamaphodi ebile ba se je dimonamonane.

Barutwana ba tshepiša morutiši gore ba tla dira bjalo.

Mosima le Pheladi ba ipotša gore seo se ka se kgonege. Ba tšwela pele ka go tshela melao yeo. Ba leka ka makga a mantši go hlohleletša Mmanoko go tshela melao yeo gomme yena a gana.



Letšatši la diphadišano le batametše. Morutiši o nyaka bahlabeletši. O bitša barutwana ka o tee o tee gore ba opele.

Pheladi a tla pele gomme a se kgahle morutiši. Ka morago gwa tla Mosima le yena a palelwa.

Morutiši a thoma go tšhoga gore bjalo o tlile go dira bjang ka ge bao a bego a ba tshepile ba a palelwa. O be a tseba gore Pheladi le Mosima ga se ba latela seo a ba kgopetšego go se dira.

Ka morago gwa tšwelela Mmanoko. Yena o rile ge a opela, ya ba o ka re maboto a holo ya sekolo ke dithuša mantšu. O ile a opela go swana le seopedi sa go tuma sa mmimo wa klasiki Pretty Yende.

Morutiši a thaba, a tseba gore ba ile go fenyā.

Ge e le Mosima le Pheladi bona, morutiši o ba boditše go re ba ka se be maloko a sehlopha diphadišanong.



Thapelo

Modimo Tate, Modimo mohlodi wa legodimo le lefase.
Le lehono ke a rapela tate, ke re nthuše ke se fapoge
tseleng ya gago.

Dipotšišo

1. Efa maina a basetsana bao go bolelwago ka bona.
2. Efa leina la sekolo sa go tuma ka tša meopelo.
3. Morutiši o ile a kgopela bana go dira eng? Bolela
tše pedi.
4. Mosima le Pheladi ba ile ba dira eng?
5. Mmanoko o ile a opela go swana le mang?
6. O gopola gore morutiši o dirile nnete ge a tlogela
Pheladi le Mosima? Efa mabaka.

Mantšu a maswa

Botega = tshepega

Obamela = hlompa

Ngwako = ntlo

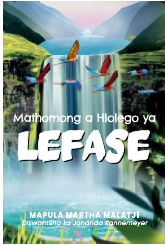
Hlankela = rapela

Dimonamonane = malekere

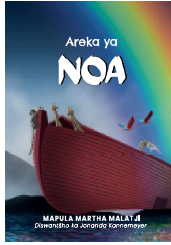
Mmolelo

Go hlobaela = go se iketle

Daniele ka moleteng wa ditau ke ye nngwe ya dipuku tše 20 tše di bontšhago dikanegelo tše 10 tša Testamente ya kgale le tše 10 tša Testamente ye ntshwa, moo ye nngwe le ye nngwe ya tšona e nago le ditiragalelo-maphelong, di ithekgile ka tša Beibele.



Puku_1



Puku_2



Puku_3



Puku_4



Puku_5



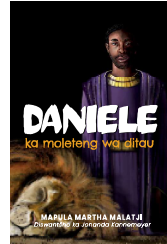
Puku_6



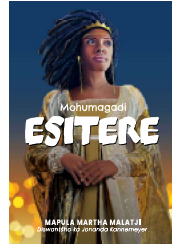
Puku_7



Puku_8



Puku_9



Puku_10



Puku_11



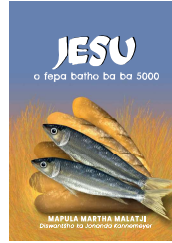
Puku_12



Puku_13



Puku_14



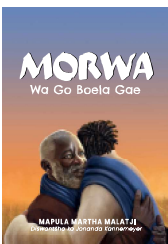
Puku_15



Puku_16



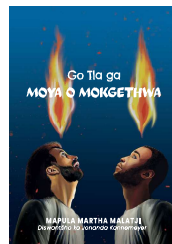
Puku_17



Puku_18



Puku_19



Puku_20

Daniele ka moleteng wa ditau

Naa o gopola gore go ile gwa direga eng ka Daniele ka moleteng wa ditau? Bala puku o kwe gore gobaneng Daniele a ile a lahlelwa ka moleteng wa ditau.

Dinaledi tša mmimo

Pukung ye, o humana gape le kanegelo ya basetsana ba bararo ba go opela bjalo ka thaga, nonyana ya go se hwe lentšu.

Bala puku o ithute ka fao Modimo a šireletšago bao ba latelago melao ya gagwe.



9781776467266

Sepedi

